

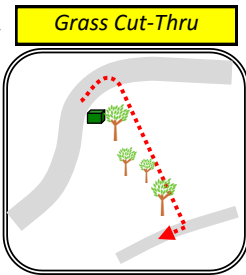
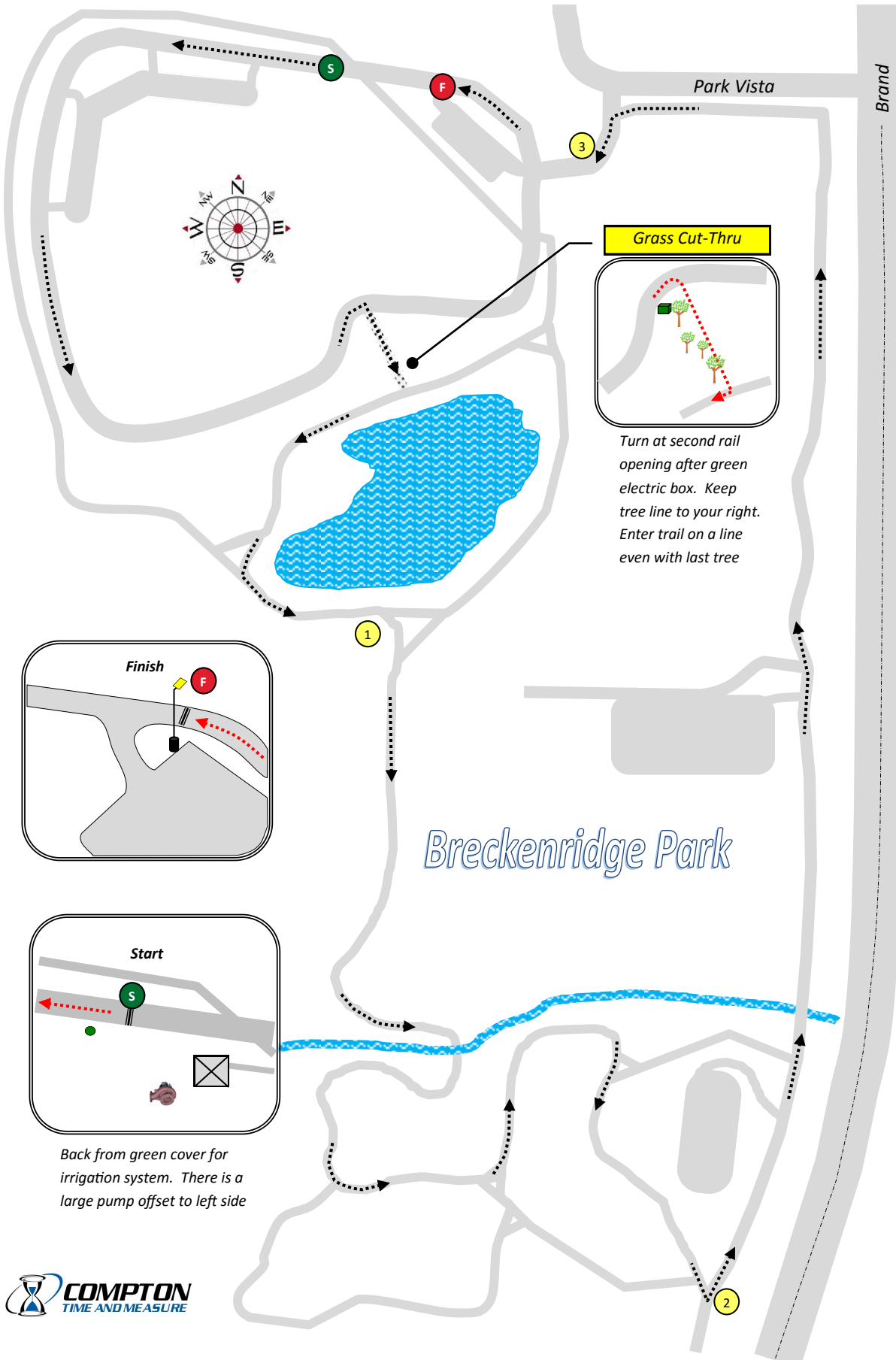


Off The Beaten Path 5K | Richardson, TX

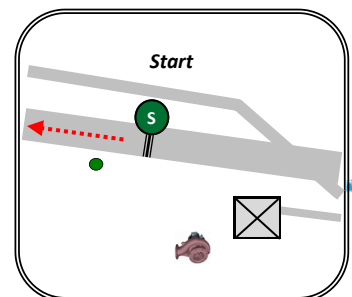
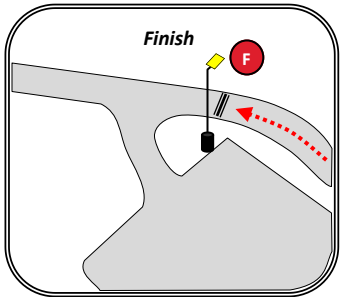
USATF Certification TX16012MWC | Effective May. 24th 2016 to Dec. 31st 2026

No Restrictions. Not all trails & streets are shown. Not to scale.

Measured by Matthew Compton.



Turn at second rail opening after green electric box. Keep tree line to your right. Enter trail on a line even with last tree



Back from green cover for irrigation system. There is a large pump offset to left side

**Start**  
22.5 feet before green drainage box lid on the left  
N32.99725° W96.62818°

**Mile 1**  
Before right turn at trail fork to go South after running perimeter of the pond.  
N32.99177° W96.62740°

**Mile 2**  
At manhole cover before turning left to go north from the park trail to the sidewalk skirting Brand.  
N32.98547° W96.62353°

**Mile 3**  
150 ft. before turning right at the soccer field perimeter parking drive.  
N32.99624° W96.62537°

**Finish**  
Even with large steel light pole just before turn into the North-most entrance of the first parking lot.  
N32.99705° W96.62677°

